



MANUFACTURER OF BACKFLOW ENCLOSURES, TANKLESS WATER HEATER ENCLOSURES, AND CONTROLLER ENCLOSURES



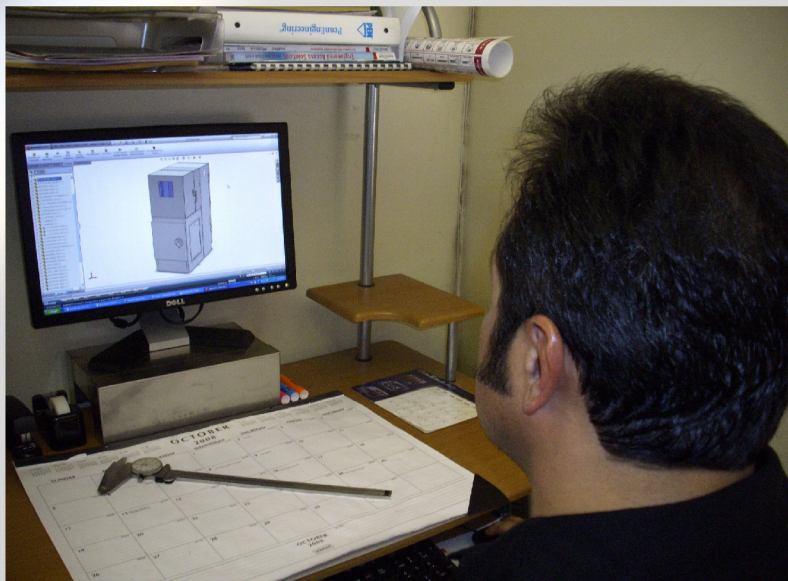


Company Profile

Founded in 1998, All Spec Enclosures Inc., is the leading provider of premium steel and mesh enclosures. We offer a vast range of enclosure products for backflow devices, tankless water heaters, irrigation controllers and much more. We also offer custom designed enclosures for your specific needs, from prototype, to high volume production runs of a finished design.

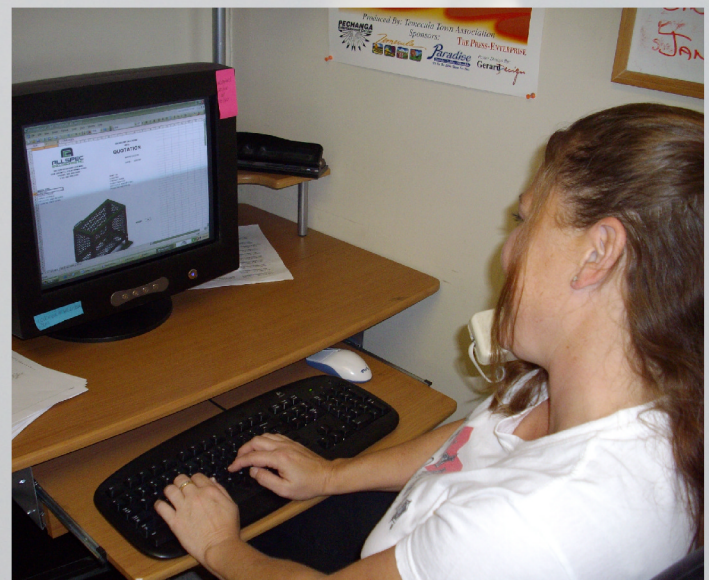
Our Mission

Is to respond favorably to our customers needs. We will continue to cultivate our relationship with our customers by saying yes and encourage our clients to continually challenge and pursue every opportunity with us.



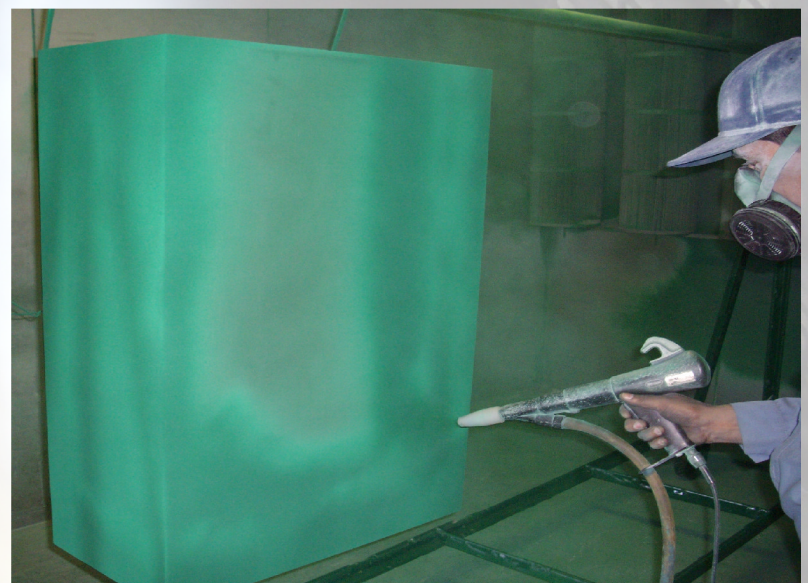
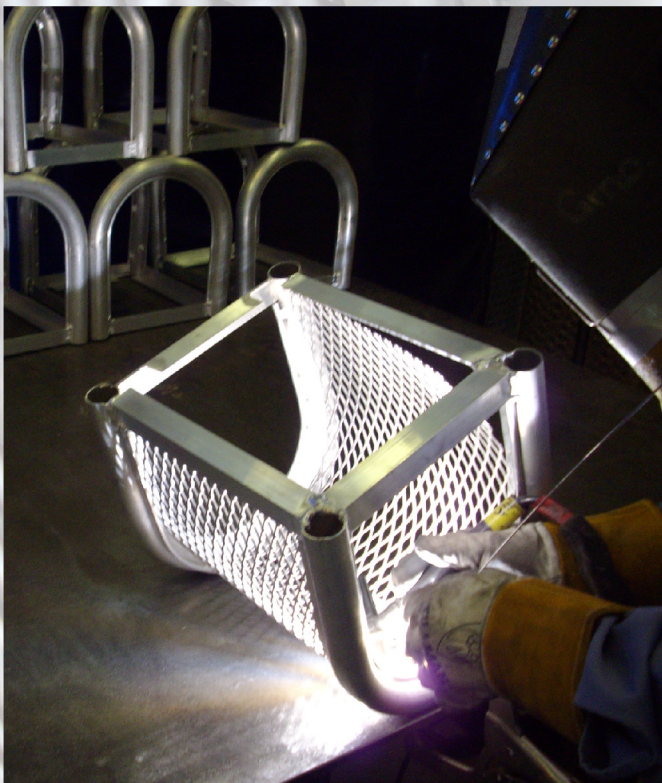
Design, Engineering and Customer Service

Our in-house design, engineering and customer service team will personally handle your project requirements in a timely manner, from the proposal stage to completion. We use state of the art 3 dimensional computer aided drafting and computer numeric control programming technologies. We are committed to our customers total satisfaction. Offering excellent customer service, rapid response to customer needs, high quality products, and on time delivery.



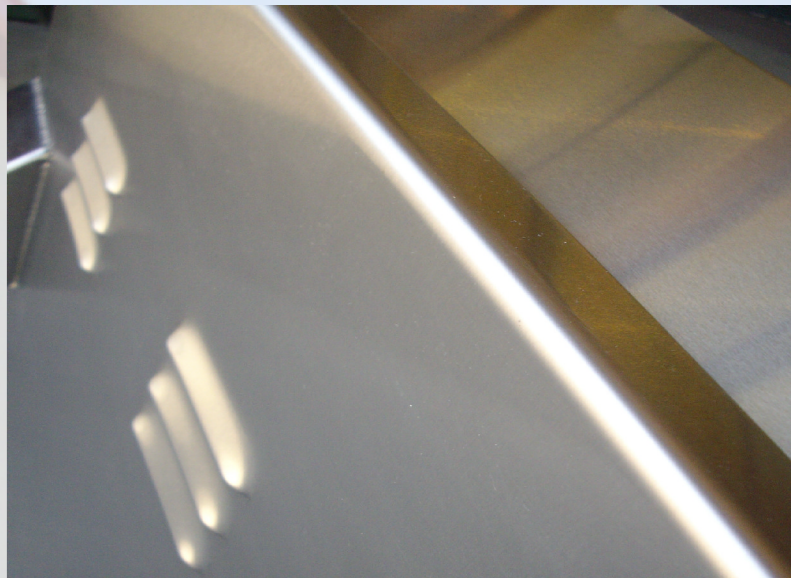
Manufacturing

Our 15,000 square foot facility features state of the art equipment for manufacturing enclosures, which allows us to fabricate cost effective products without compromising quality. Along with the latest machinery, AllSpec has many years of experience, which gives us the capabilities to produce the finest products on the market. Our enclosures are UL Listed and NEMA 3R Certified, made from 304 grade stainless steel, marine grade aluminum, and mild steel, and powder coated using an organic polymer for lasting durability and are available in many colors. Our enclosures allow for easy access for service or testing, while deterring vandalism and theft of above ground equipment. Professionals in the industry come to us for their backflow prevention, irrigation, and plumbing needs, to mount and protect backflow prevention devices, as well as protecting electronic controls and irrigation valves. AllSpec is an all in one manufacturing facility. We have the capabilities of doing everything in house, from the proposal stage, to completion. All Spec has been making quality products for over a decade. We understand the needs of our customers, and we are dedicated to our commitment of providing them with quality products, competitive pricing, and unsurpassed service in the industry.



Quality

Quality and flawless manufacturing have been the focus to AllSpec Enclosures commitment to our customers. All of our employees follow a policy of continuous improvement. Our loyal workforce is fully aware of the quality and delivery requirements demanded in the market place. Our customers can rely on flexible and responsive services from our dedicated team.



Product Availability

We maintain our warehouse with a wide selection of AllSpec products, for new and existing customers, ready for immediate delivery. Our pledge of providing our customers with quality products that are available and ready for shipping, makes us a leader in the industry. AllSpec is constantly innovating ways to bring the finest product available to the market...faster, and without substituting quality and precision.

Contact Us

If you're looking for quality, dependability, and integrity from a company with a reputation for excellence, contact us today. We will answer your questions honestly and with a level of knowledge that only experience can provide. Please give us a call today for more information on the many services we have to offer. We are more than happy to help in any way possible and look forward to working with you.

AllSpec Enclosures Incorporated
582 South Grand Avenue
San Jacinto, California 92582
Phone: 951-654-5500
Fax: 951-654-5150
info@AllSpecenclosures.com

Along with our manufacturing facilities, we also have distribution centers in Cerritos, Ca., Sacramento, Ca., and Phoenix, Az.